

# Lead Maintenance Engineering Technician



THE PLYMOUTH  
ENGINEERING  
SKILLS  
CENTRE

THE CORNWALL COLLEGE GROUP

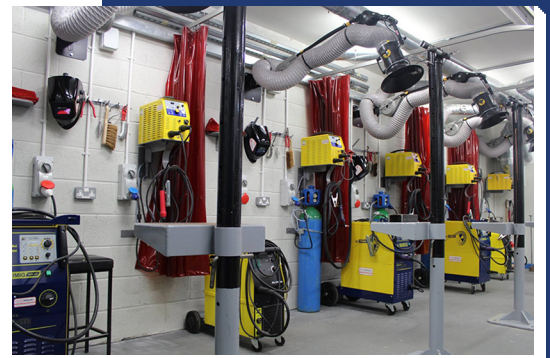
## Apprenticeship

Lead maintenance engineering technicians typically perform a multi-disciplinary role, managing or leading other technicians. They may specialise in areas such as mechanical, electronic, or electrical engineering. The broad purpose of the occupation is to offer engineering support, technical leadership and expertise. Examples can include support for installation, refit, overhaul, alteration, upgrading, design and maintenance.

They can also provide support for testing of significant assets, systems or machinery. They assist in the delivery of complex and critical asset management programmes. These asset management programmes are often to unique specifications involving complex maintenance and planning. They analyse technical information, plan schedules, co-ordinate, lead and deliver work on time. They ensure work is completed to the required quality, following product and personnel safety processes.

They provide customer liaison, leadership, support and expertise to maintenance teams on technical issues. They deal with problems that occur using a structured and controlled approach. They carry out inspections on systems, equipment and components. They may lead on the commissioning back into operation after maintenance and overhaul.

They can work in office environments while conducting research or maintenance design and scheduling activities.



Scan the QR Code for full course description, assessment and progression options from this course

### ENTRY REQUIREMENTS

A minimum level 2 (GCSE level 4 or equivalent) in mathematics and English required.



A level 3 qualification (such as a BTEC Diploma, T Level or a minimum of 2 A Levels (including maths & a science).

Appropriate Level 3 Apprenticeship.



Find out more and  
apply online



# Lead Maintenance Engineering Technician

Apprenticeship

THE PLYMOUTH  
ENGINEERING  
SKILLS  
CENTRE

THE CORNWALL COLLEGE GROUP

## LOCATION & NEXT START DATE(S)

The Plymouth Engineering Skills Centre - As required



### LEVEL

Level 4

### DURATION

2 or 4 years depending on previous experience and qualifications

### ATTENDANCE

Work-based

### FEES

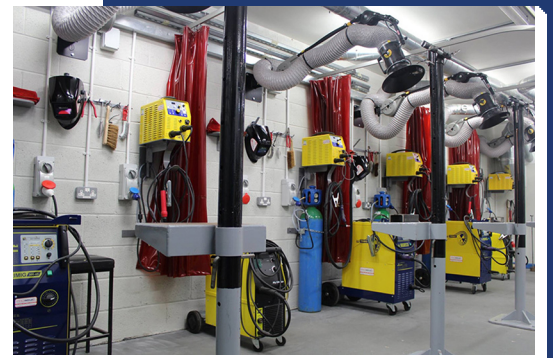
Tuition Fees: £0.00

Fees apply to adults and HE students only. Only the most common fees scenario is shown. Actual fees may vary depending on your personal situation. Please contact us for further information. Courses listed on this website are indicative of the subject, nature and level of study. The College reserves the right to alter specific qualifications titles, awarding bodies and levels of qualification, which can change in year. Any cost may also vary, based on personal funding eligibility. The Cornwall College Group reserves the right to withdraw any course listed at any time.



## Explore Our Courses & Apprenticeships

Join us for a campus tour, meet our dedicated team, and get all your questions answered. Scan the QR code to register for our next Open Event or Taster Day.



Find out more and  
apply online

